

# NetScanTools® Pro



## Monthly Newsletter

www.netscantools.com

September 2020

 <https://twitter.com/netscantools>

 <https://www.facebook.com/NetScanTools>

 <https://www.youtube.com/user/netscantools>

 <https://netscantools.blogspot.com/>

### In this newsletter:

#### News

- **Switch Port Mapper 2.85 released Sept 28, 2020**
- **NetScanTools Pro 11.91.2 released Sept 2, 2020**
- **SSL Certificate Scanner 2.71 Released August 13, 2020**
- **NetScanTools Pro Maintenance Plan Price Reductions**

## News...

### From the Editor...

September saw two releases, one for NetScanTools Pro and the other for the Managed Switch Port Mapping Tool.

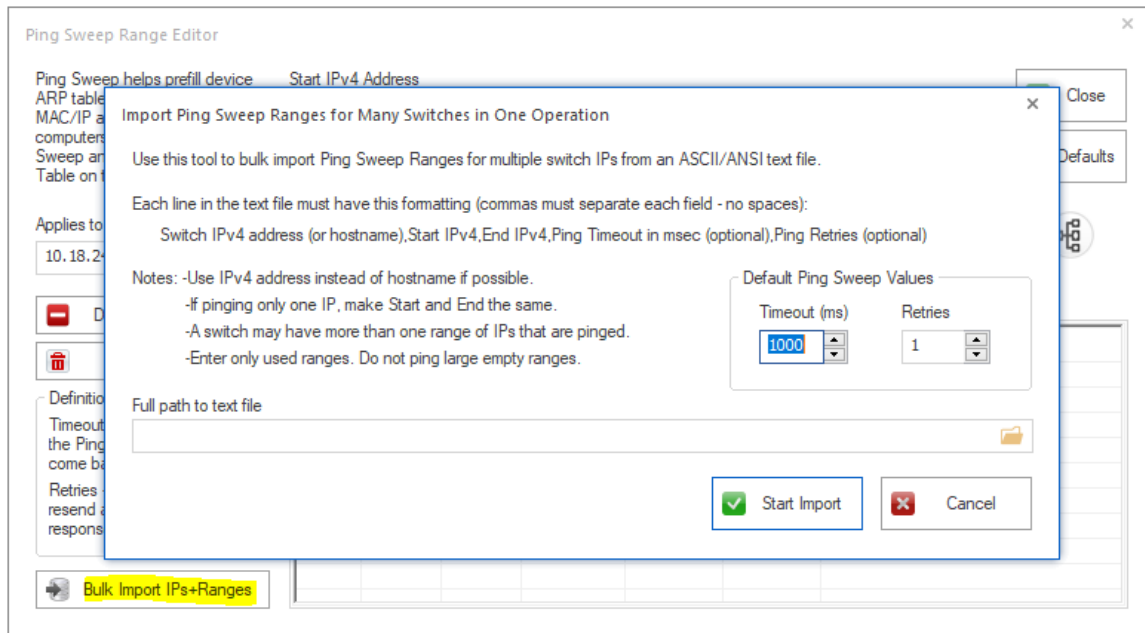
Thank you and please keep safe.

-Kirk

### **Managed Switch Port Mapping Tool 2.85 Released Sept 28, 2020**

**This release of the switch port mapper focused on two areas: importing a large quantity of Ping Sweep target ranges for a number of switches and fixing a problem with secure fields in the database. Other minor changes were also included.**

A customer recently requested a way to add Ping Sweep ranges to more than one switch at a time without having to load each switch and use the Ping Sweep Range Editor – it was very time consuming. The new method allows you to create a simple text file with the switch IP followed by the range and the ping parameters. You go to the Ping Sweep Range Editor and press the Bulk Import IPs + Ranges and follow the directions. We have some input processing checks for example any switches that are not previously defined will not have their Ping Sweep Ranges added.



The problem with the secure database fields was difficult to track down but with a customer's help it has been fixed. There are five database fields that can be encrypted for privacy using the lock/unlock icon in the left control panel. Under certain circumstances a couple of the fields were not being encrypted so when it tried to decrypt them, the software might crash. This has been addressed.

The app now detects switch operation in Layer 2 or Layer 3 mode. This is displayed in the switch Test in Settings, the lower left results list and in the web page popup reports. There is more of a distinction in the left control panel as to when you should use Router/Server 1 or 2. Those make best sense when you are mapping Layer 2 switches.

When you export the switch mapping results to a file it now includes a number of parameters such as serial number, manufacturer, model, contact, location, etc.

As usual, we updated SQLite and the mac address to manufacturer database.

To upgrade an 'installed' version, download the trial and install over the top. The trial can be found at <https://www.switchportmapper.com/download.htm>

### **Changes in 2.85:**

- Fixed problems with protecting certain database fields.
- Added method for bulk importing Ping Sweep ranges for a number of switches to Ping Sweep Range Editor.
- Added methods for detecting Layer 3 vs. Layer 2 switches.
- Revised Router/Server 1/2 notation to suggest use with Layer 2 switches only - use with Layer 3 switches is optional.
- Summary area of left control panel now shows Layer 2 or 3 switch type as does post-mapping web page report. Test Device in Settings also shows Layer 2/3 analysis.
- Improved exporting to file of switch mapping results to include a number of parameters such as serial number, manufacturer, model, contact, location, etc.
- Updated MAC address/Manufacturer database.
- Updated SQLite to version 3.33.0

### **NetScanTools Pro 11.91.2 released Sept 2, 2020**

**This release updated the SSL Certificate Scanner tool to match the standalone release 2.71. We also fixed a long-standing problem with the Packet Generator and the ARP Scanner tools.**

The SSL Certificate Scanner changes were the same as for the standalone version. The problem with Packet Generator was with scripting, specifically WINPCAP\_INTERFACE\_IPFOUR=a.b.c.d – when using the software on a computer with multiple interfaces, it allows you to specify the interface. It was not working correctly before and now it has been fixed.

ARP Scanner now correctly sorts by IP address when it is done scanning. SQLite and the databases have been updated.

To obtain this new NetScanTools Pro version you must have an active maintenance plan. Click on Help menu/Check for New Version, then locate a link in the embedded web page. Click on it to open your default browser, enter your access credentials to download the new full installer. Exit NetScanTools Pro and run the installer to update the software to 11.91.

### **Changes in 11.91.2:**

-SSL Cert Scanner - Added tests and checkbox display for supported SSL/TLS client protocols. If a supported protocol is not active, it can be temporarily activated for testing. SSLv2 and SSLv3 are no longer supported by Windows 10 2004 release. Earlier versions of Windows may support all versions of SSL/TLS. Unsupported protocols or disabled protocols are labeled with 'Skipped' in the results columns.

-SSL Cert Scanner - Added ability to enter and save to the results database several entries of the same target with different ports. Useful if a target has an SSL web server running on more than one port.

-SSL Cert Scanner - Corrected problem where key length, public key and version were being saved incorrectly to the database.

-SSL Cert Scanner - Expanded 'Invalid Date' message to show the date and time even though they are out of range ie. greater than year 2045.

-SSL Cert Scanner - Improved TLS 1.0/1.1/1.2 error messaging.

-Packet Generator - The previous directory used when opening a script is now remembered between sessions.

-Packet Generator - The command WINPCAP\_INTERFACE\_IPFOUR=a.b.c.d now works correctly.

-Registration Window - More messages were added to remind users to use the Register Online at NetScanTools.com button if the built-in registration method does not work correctly.

-ARP Scanner - Initial sort order by IPv4 address is now correct.

-Updated SQLite to version 3.33.0

-Updated MAC address/Manufacturer database.

-Updated IP to Country database.

## **SSL Certificate Scanner 2.71 Released August 13, 2020**

**This release has several changes. Three things stand out:**

- 1.** Tests to find out which SSL/TLS client options are active and supported on the host operating system. If a protocol is available but not active, you can temporarily turn it on for testing.
- 2.** Better error reporting especially during the connection process.
- 3.** The ability to record test results in the database for separate SSL ports on the same target. Some targets are running other SSL web servers on ports besides 443, so now when you review the data it will show the results for each port tested.

Support for TLS 1.3 will be added later.

### **List of changes.**

-Added tests and checkbox display for supported SSL/TLS client protocols. If a supported protocol is not active, it can be temporarily activated for testing. SSLv2 and SSLv3 are no longer supported by Windows 10 2004 release. Earlier versions of Windows may support all versions of SSL/TLS. Unsupported protocols or disabled protocols are labeled with 'Skipped' in the results columns.

-Added ability to enter and save to the results database several entries of the same target with different ports. Useful if a target has an SSL web server running on more than one port.

-Corrected problem where key length, public key and version were being saved incorrectly to the database.

-Expanded 'Invalid Date' message to show the date and time even though they are out of range i.e. greater than year 2045.

-Improved TLS 1/1.1/1.2 error messaging.

-Updated SQLite to version 3.32.3

To update your software, please visit the [NetScanTools.com](https://netscantools.com) website and locate the standalone version under Products.

<https://netscantools.com/ssl-certificate-scanner-standalone.html>

## **NetScanTools Pro Maintenance Plan Price Reduction**

**We reduced the price of the Maintenance Plan renewal. Please visit the maintenance renewal web page for the current sale pricing by clicking on Help menu/Maintenance Plan Renewal.**

We simplified our maintenance plan offerings. We now offer the 'one year' plan at a lower price through FastSpring. USA sales tax exempt customers can still order directly from us by phone or PO.

Remember, you can choose not to renew the maintenance plan and continue to use the software. But you will not receive updates or technical support.

## **Contact Information**

If you have any questions or suggestions, please feel free to email.

Northwest Performance Software, Inc.  
PO Box 1375  
Sequim WA 98382  
(360) 683-9888  
[www.netscantools.com](http://www.netscantools.com)  
sales [at] netscantools [dot] com

'NetScanTools Pro', 'NetScanTools Standard', 'NetScanTools Basic', 'NetScanTools LE', 'ipPulse', 'Northwest Performance Software' and 'NetScanTools.com', are trademarks of Northwest Performance Software, Inc. 'NetScanTools' is a registered trademark of Northwest Performance Software, Inc.

Other names and trademarks are the property of their respective owners.